

Specifications and Features for Model SMA5005-4-1, Hi-Band Servo Amplifier

Electrical	
Bus Voltage	+24 to +70 VDC - Nominal +65 ± 5 VDC
Maximum Amplifier Power Dissipation	400 W @ 25 °C heatsink temperature
Peak Current Output	±15 A max.
Continuous Current Output**	4 A RMS
Amplifier Type	Current Mode (Transconductance)
Input Command Signal	±10 VDC (Max.)
Input Command Signal Gain	1.5 AV/ Nominal
Bandwidth (90 degree phase shift)	6.5 KHZ *
Current Monitor Test Point	2.0 AV/ Nominal
Fault Output	Opto isolated can sink up to 50 mA or max 150 mW
External Fault Reset Input	Pulled down / Active high
Inhibit Input	Pulled high / Active high
Maximum output offset (as shipped)	With grounded signal input, output across 3 ohms load will be typically ±2.5 mA
Potentiometer	Adjustable DC offset voltage
Balance (20 turn)	
Faults	
Low Speed Electronic Circuit Breaker (LS/ECB)	Latches when current exceeds ±5 A for 1 sec.
High Speed Electronic Circuit Breaker (HS/ECB)	Latches when current exceeds ±10 A for 30 mSec.
Amplifier Over temperature	Amplifier faults and is inhibited if the cold plate temperature reaches 75 °C
Status Indicators	
Run LED: + (Anode) - (Cathode)	Amplifier enabled, normal operating condition
Inhibit LED: + (Anode) - (Cathode)	Amplifier disabled, non-latched condition (Externally inhibited)
Fault LED: + (Anode) - (Cathode)	Amplifier over temperature, LS/ECB, HS/ECB (latched condition)
Environmental	
Operating Temperature	0 °C to +75 °C
Storage Temperature	-40 °C to +80 °C
Humidity	5% to 95% non-condensing
Mechanical Dimension	
L x W x H (inches)	7.13 x 1.57 x 5.31

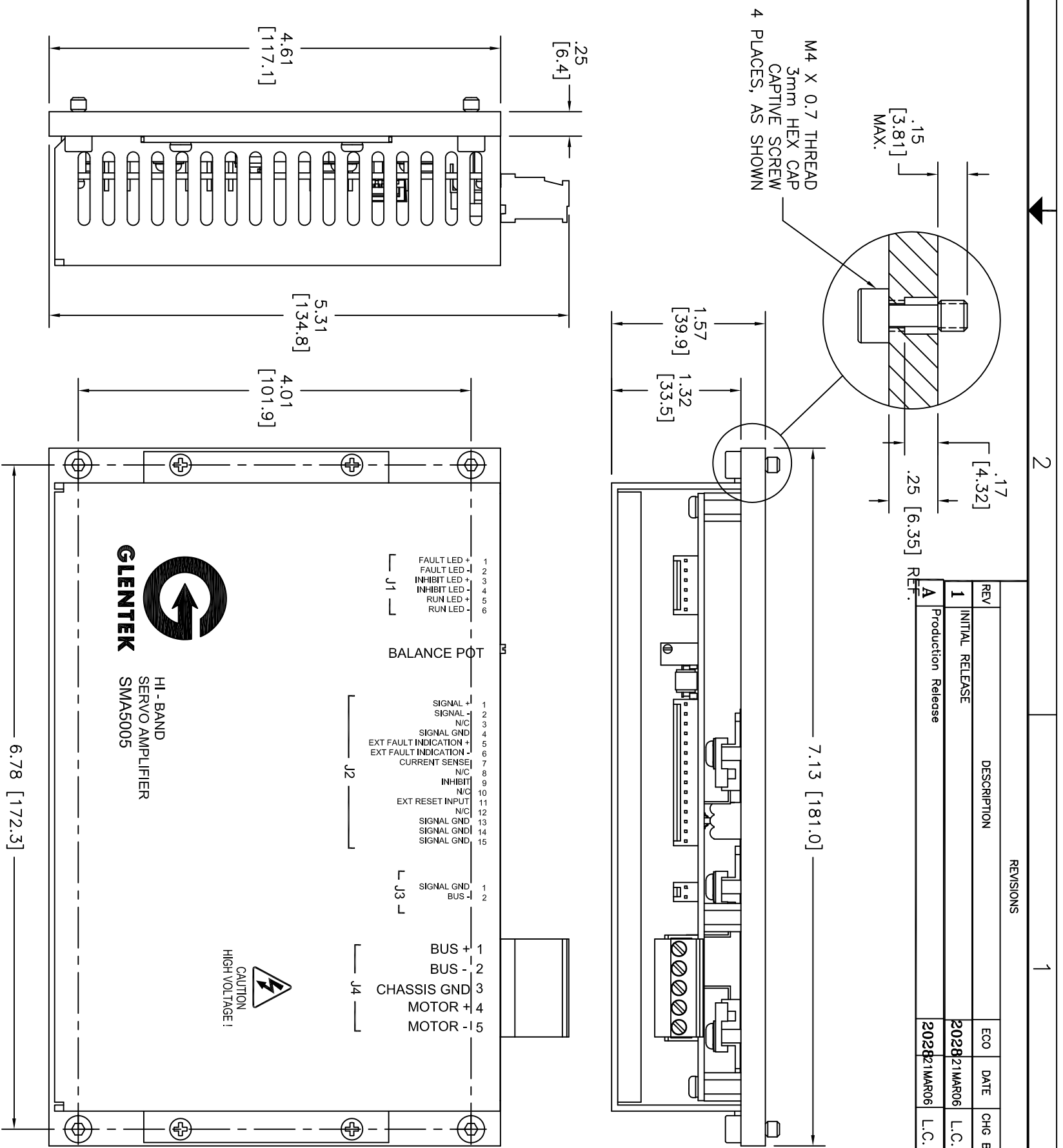
* Factory tuned to match load

Maintenance Requirements:

There are no field replaceable components.

Mating connectors:

Output mating connector (J1) - Molex part number 22-01-3067 (Series 2695)
 Input mating connector (J2) - Molex part number 22-01-3157 (Series 2695)
 Output mating connector (J3) - Molex part number 22-01-3027 (Series 2695)
 Output mating connector (J4) - Phoenix part number 1792786 MVSTBW 2.5/5-ST-5.08



REVISIONS		ECO	DATE	CHG BY	APPD BY
1	INITIAL RELEASE	2028	21MAR06	L.C.	C.V.
A	Production Release	2028	21MAR06	L.C.	C.V.

(COLD PLATE VERSION)

THE INFORMATION CONTAINED IN THIS DOCUMENT WAS ORIGINATED BY AND IS THE EXCLUSIVE PROPERTY OF GLENTEK INC. THIS PROPRIETARY INFORMATION SHALL NOT BE REPRODUCED, TRANSFERRED TO OTHER DOCUMENTS, DISCLOSED TO OTHERS, USED FOR MANUFACTURING OR ANY OTHER PURPOSE WITHOUT PRIOR WRITTEN PERMISSION FROM AN OFFICER OF GLENTEK INC.

UNLESS OTHERWISE SPECIFIED:	MODEL: SMA5005-4
DIMENSIONS ARE IN INCHES	DRAWN BY: T.P.
BREAK ALL SHARP EDGES SURFACE ROUGHNESS .005 TO .015	DATE: 21MAR06
TOLERANCES	CHECKED BY: L.C.
DECIMALS ± .01	APPROVED BY: L.C.
ANGULAR ± 0.5°	FINISH: -
MATERIAL: -	
REF. / CONFIGURATION CODE NUMBER: -	

208 Standard Street
GLENTEK "Solutions for Motion Control"
 El Segundo, CA 90224 USA
 310.322.3026 FAX 310.322.7709
 www.glenetek.com

TITLE: GLENTEK'S HI-BAND SERVO AMPLIFIER INSTALLATION
 SIZE: B
 DRAWING NUMBER: 5833-1
 SCALE: 75:1 FILE: 5833-1RA.DWG SHEET 1 OF 1